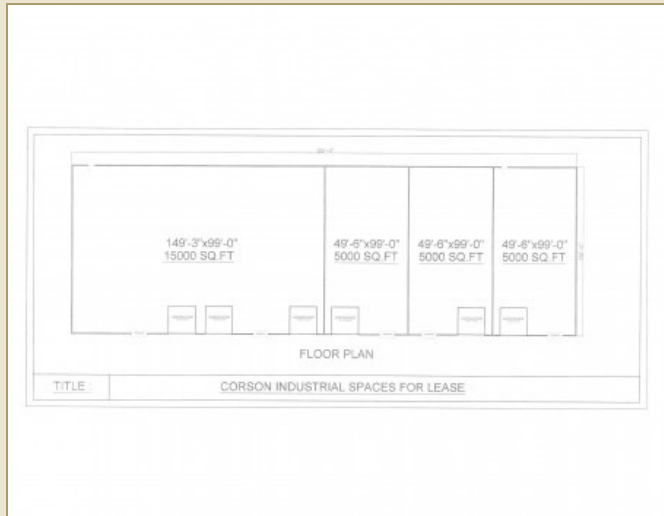


## Willow Street Light Industrial Space

Willow and Railroad Streets Brandon, SD, 57005



Light industrial space available in the Fall of 2017  
Up to 30,000 SF, divisible to 5,000SF  
Docks available all units  
16'x16' drive in doors all units  
I-90 visibility and access  
Radiant heat & fire sprinklered throughout  
City water and sewer  
20' sidewall height; Building 100'x300' overall

## FOR LEASE

### Price

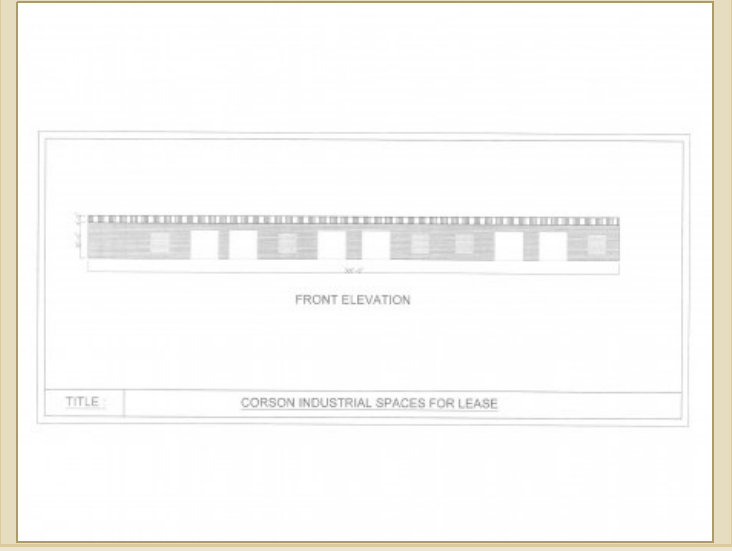
\$5.75  
Addl. Pricing: NNN

### Details

**Type:** Industrial  
**Space Available:** 5,000-30,000 SF  
**Lot / Land Area:** 120,345 SF  
**Available:** August 2017  
**Zoning:** Light Industrial  
**Utilities:** Tenant  
**Total EXP:** \$1.10  
**Traffic Counts:** Interstate and State Highway  
**Year Built:** 2017  
**Stories:** 1  
**Parking:** On Site  
**Parking Capacity:** 1-5  
**Construction:** Metal  
**Floors:** Concrete  
**Roof:** Metal  
**Heat:** Radiant  
**Heat Source:** Natural Gas  
**Air Conditioning:** None  
**Loading:** Drive-In, Dock High  
**Safety Features:** Fire Alarm, Exterior Lighting, Fire Sprinkler System  
**Terms:** Cash  
**Showing Instructions:** Call Broker  
**Possession:** Negotiable  
**Access:** Interstate One Mile  
**Road Surface:** Concrete, Asphalt, Concrete, Asphalt  
**Lease Includes:** Building(s), Land

Information deemed reliable but not guaranteed

# Additional Photos



Information deemed reliable but not guaranteed