

## Wileys Building Office Spaces for Lease Suite 302

330 N Main Ave Ste 302 Sioux Falls, SD, 57104



Suite 302 at the Wileys Building downtown is \$975 per month plus utilities. 750 Sq. Ft. available.

This suite has 2 large offices facing north with a small open room and breakroom with wet bar. This also comes with two indoor parking spaces located in the garage attached to the building. The third floor has a restroom located in the commons area as well as an elevator.

This charming office has hardwood floors, large windows for natural light and high ceilings.

## FOR LEASE

### Price

\$975 / Month  
**Addl. Pricing:** Pro Rated Utilities

### Details

**Type:** Retail, Office  
**Space Available:** 750 Sq Ft  
**Available:** June 2019  
**Stories:** 3  
**Construction:** Masonry  
**Floors:** Wood  
**Heat:** Central  
**Air Conditioning :** Central  
**Showing Instructions:** Call Broker  
**Amenities:** Elevator, Garage  
Wet Bar/Break Room  
Hardwood Floors throughout  
Great Downtown Location  
Elevator  
Commons area restrooms  
2 parking spots in garage



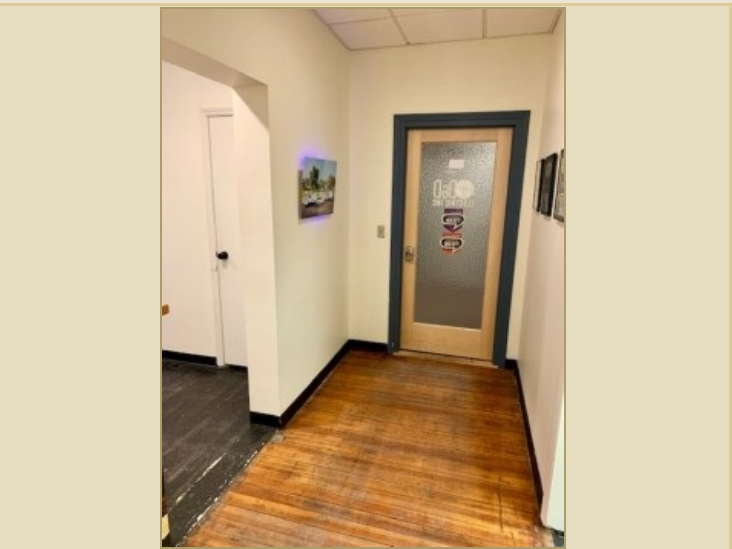
**Kirby Proehl**  
5735 E 41st Street  
Sioux Falls, SD 57110  
Cell: 605-366-8030  
Fax: 605-371-1560  
kirby@harr-lemme.com



**Paul Gourley**  
5735 E 41st Street  
Sioux Falls, SD 57110  
Cell: 605-359-1968 Cell/Text  
Fax: 605-371-1560  
phgourley@gmail.com

Information deemed reliable but not guaranteed

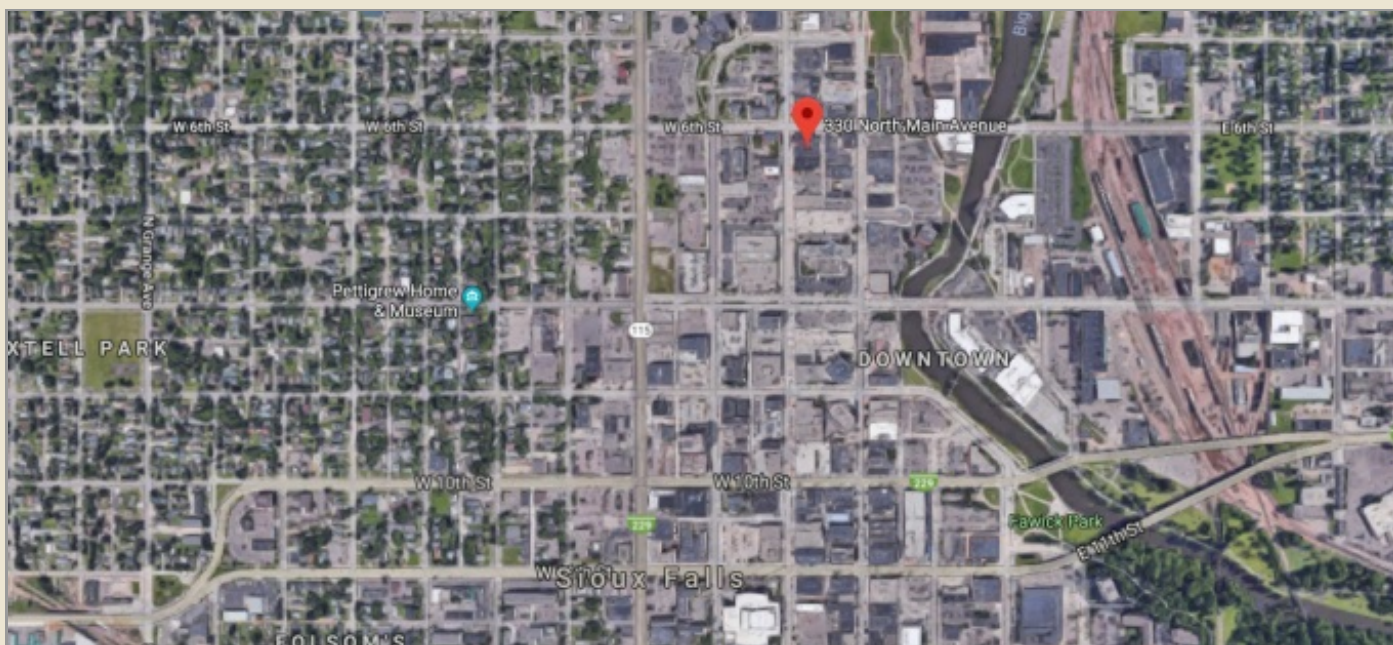
# Additional Photos



Information deemed reliable but not guaranteed



# Location Maps



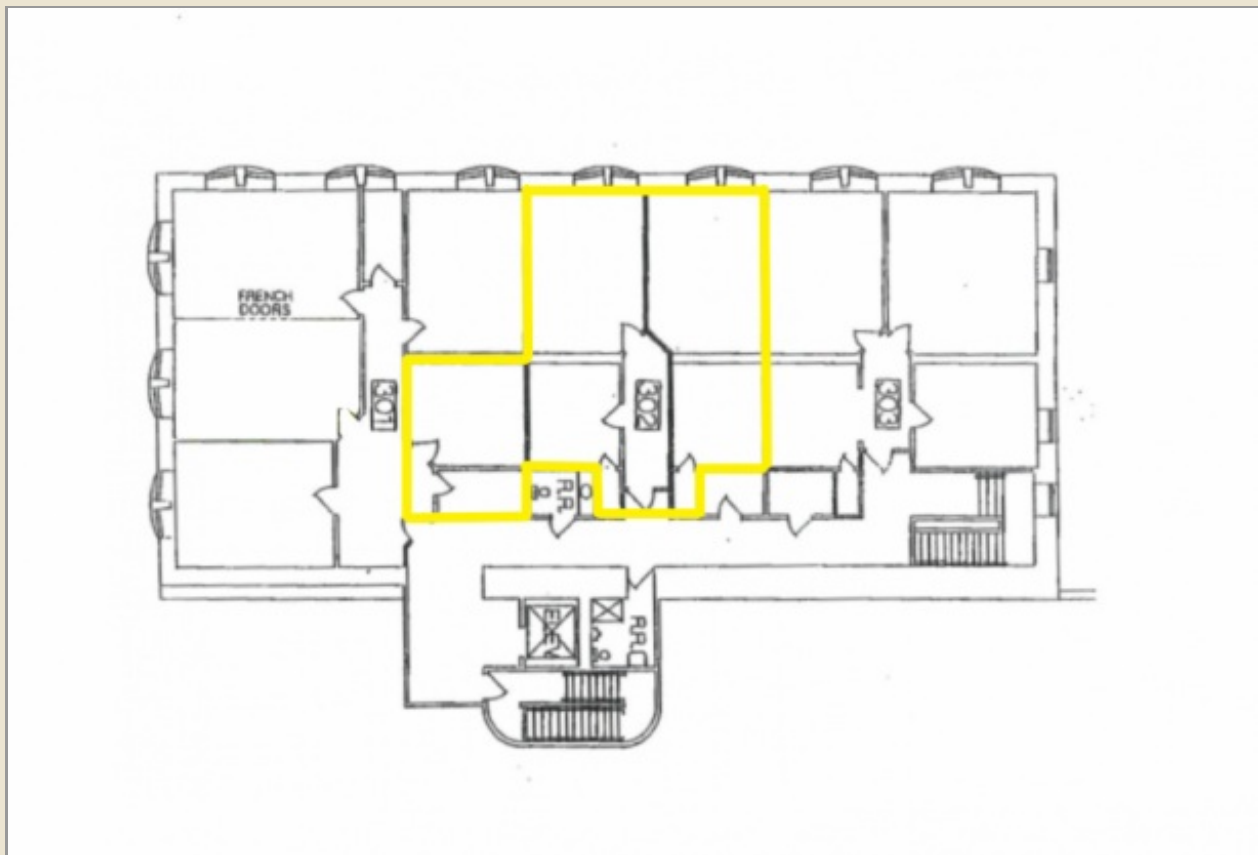
Information deemed reliable but not guaranteed



5735 E 41st Street | Sioux Falls, SD, 57110 | 605-371-0332

[www.harr-lemmecommercial.com](http://www.harr-lemmecommercial.com)

# Floor Plan



Information deemed reliable but not guaranteed