

## Wiley's Building Office Spaces for Lease Ste 301B

330 N Main Ave, Ste 301 Sioux Falls, SD, 57104



Office space for lease on the third floor of Wiley's Building downtown Sioux Falls. This space features wood floors and large open window allowing natural light in a great downtown location. Elevator in building. Common area restrooms.

One indoor parking spot included in lease.

Neighbors in building include GMG Gaming, Stephanie V Photography, D&D Electric, Realty Center Inc, Wiley's Tavern.

## FOR LEASE

### Price

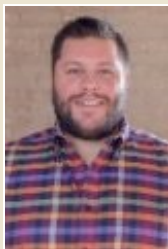
\$500 / Month  
**Addl. Pricing:**

### Details

**Type:** Office  
**Available:** Immediately  
**Stories:** 3  
**Parking:** On Site  
**Parking Capacity:** 1-5  
**Floors:** Wood  
**Heat:** Central  
**Air Conditioning:** Central  
**Services:** Sanitation Sewer, Natural Gas, Curb/Gutter, Bus, City Water  
**Safety Features:** Fire Alarm  
**Showing Instructions:** Call Broker  
**Possession:** Negotiable  
**Access:** City Street  
**Road Surface:** Concrete, Concrete  
\$500 per month  
Indoor parking space included  
Elevator and common area restrooms



**Kirby Proehl**  
5735 E 41st Street  
Sioux Falls, SD 57110  
Cell: 605-366-8030  
Fax: 605-371-1560  
kirby@harr-lemme.com



**Paul Gourley**  
5735 E 41st Street  
Sioux Falls, SD 57110  
Cell: 605-359-1968 Cell/Text  
Fax: 605-371-1560  
phgourley@gmail.com

Information deemed reliable but not guaranteed

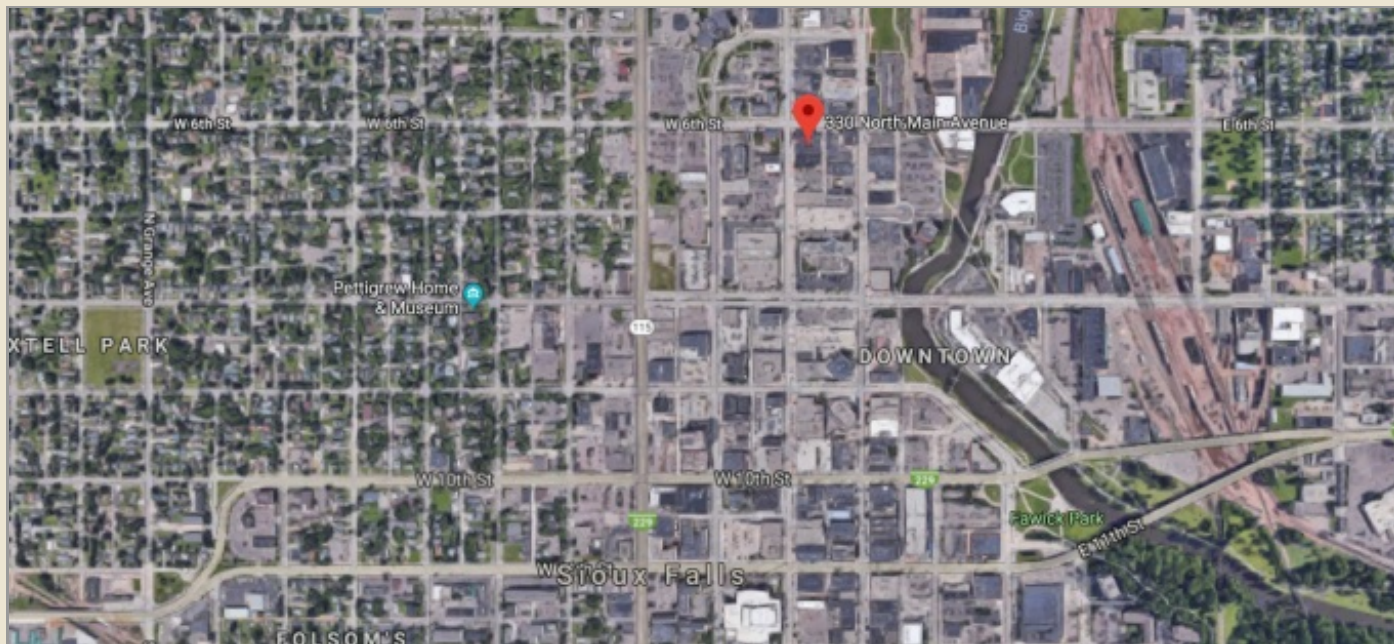
Additional Photos



Information deemed reliable but not guaranteed

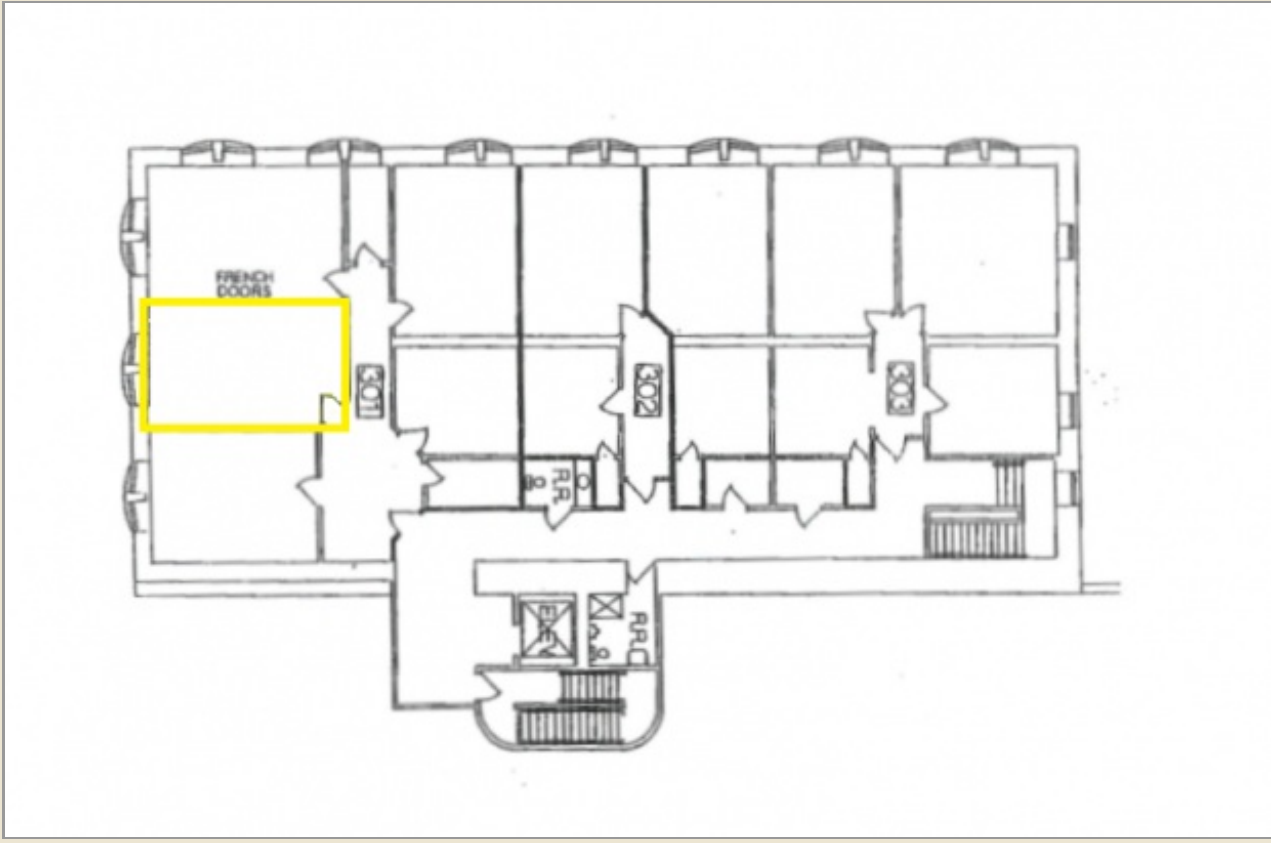


# Location Map



Information deemed reliable but not guaranteed

# Floor Plan



Information deemed reliable but not guaranteed