



Wiley's Building Office Spaces for Lease Ste 301

330 N Main Ave Sioux Falls, SD, 57104



Office space for lease on the third floor of Wiley's Building downtown Sioux Falls. This space features wood floors and large open window allowing natural light in a great downtown location. Elevator in building. Common area restrooms.

Suite A- \$325 no indoor parking space

Suite B- \$500 one indoor parking space

Neighbors in building include GMG Gaming, Stephanie V Photography, D&D Electric, Realty Center Inc, Wiley's Tavern.

FOR LEASE

Price

\$325 / Month
Addl. Pricing:

Details

Type: Office

Stories: 3

Baths: 1

Parking: On Site

Floors: Wood

Air Conditioning : Central

Suite A- \$325 -No indoor parking

Suite B- \$500 -One indoor parking space

Elevator and common area restroom



Kirby Proehl

5735 E 41st Street
Sioux Falls, SD 57110
Cell: 605-366-8030
Fax: 605-371-1560
kirby@harr-lemme.com



Paul Gourley

5735 E 41st Street
Sioux Falls, SD 57110
Cell: 605-359-1968 Cell/Text
Fax: 605-371-1560
phgourley@gmail.com

Information deemed reliable but not guaranteed

Additional Photos



Information deemed reliable but not guaranteed

Location Maps



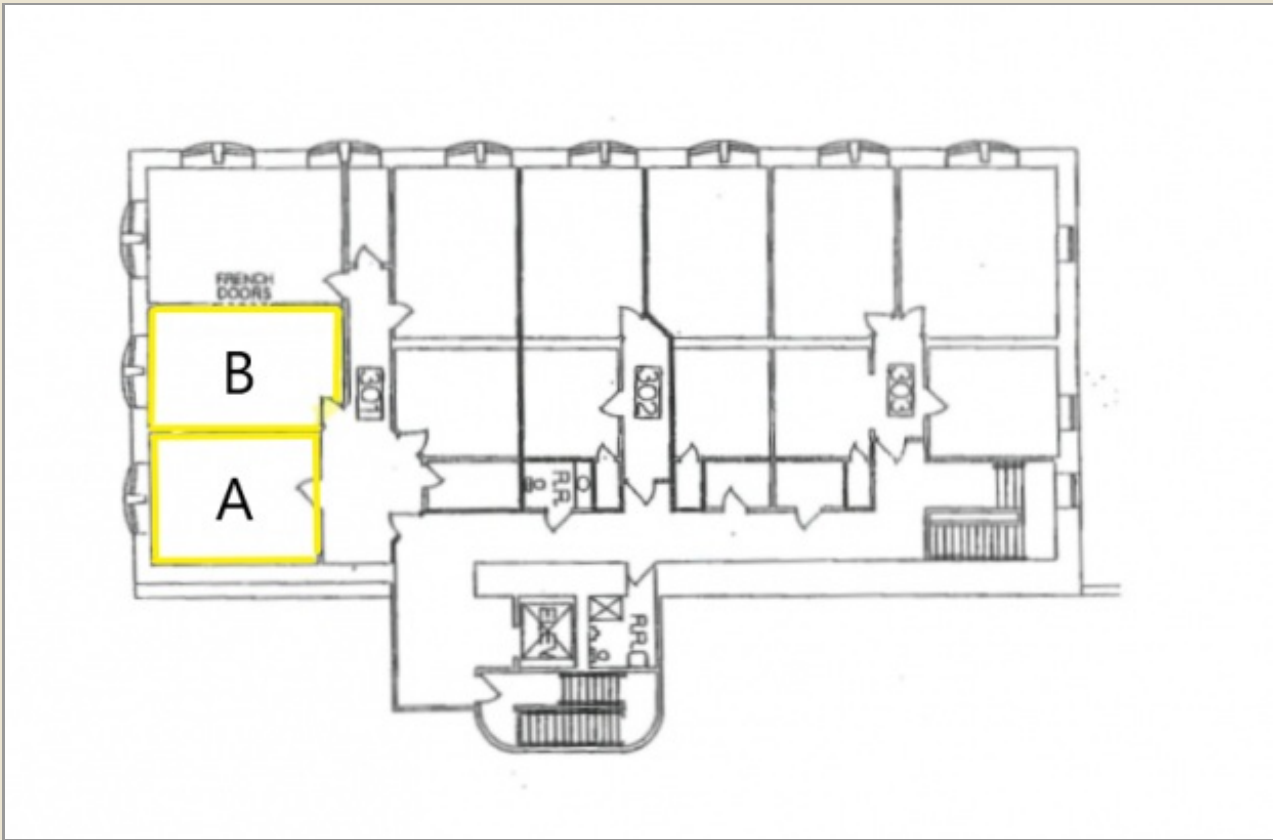
Information deemed reliable but not guaranteed



5735 E 41st Street | Sioux Falls, SD, 57110 | 605-371-0332

www.harr-lemmecommercial.com

Floor Plan



Information deemed reliable but not guaranteed