



Western Avenue Office Space

3500 S Western Avenue Sioux Falls, SD, 57105



FOR LEASE

Price

\$1,280 / Month

Addl. Pricing: Gross includes Gas, Electric, and Water

Details

Type: Office

Baths: 2

Floors: Vinyl

Showing Instructions: Call Broker

\$1,280/month Gross. Includes Utilities

Six Offices

Two Restrooms

Building & Digital Signage

Newly Remodeled

Located on Garden Level of the Pillar Insurance Building.

1,280 Square Feet Office Space.

\$1,280/ month Gross Includes Utilities.

Six Offices with Two Restrooms.

Could use one office as a copy/break room and one as a conference room.

Newly remodeled with new flooring and fresh paint.

On-Site Parking

Building Signage & Digital Signage Available.

Highly visible area with a traffic count of 19,100 vehicles/day.



Kirby Proehl
3408 S Sycamore Ave.
Sioux Falls, SD 57110
Cell: 605-366-8030
Fax: 605-371-1560
kirby@harr-lemme.com



Paul Gourley
3408 S Sycamore Ave.
Sioux Falls, SD 57110
Cell: 605-359-1968 Cell/Text
Fax: 605-371-1560
phgourley@gmail.com

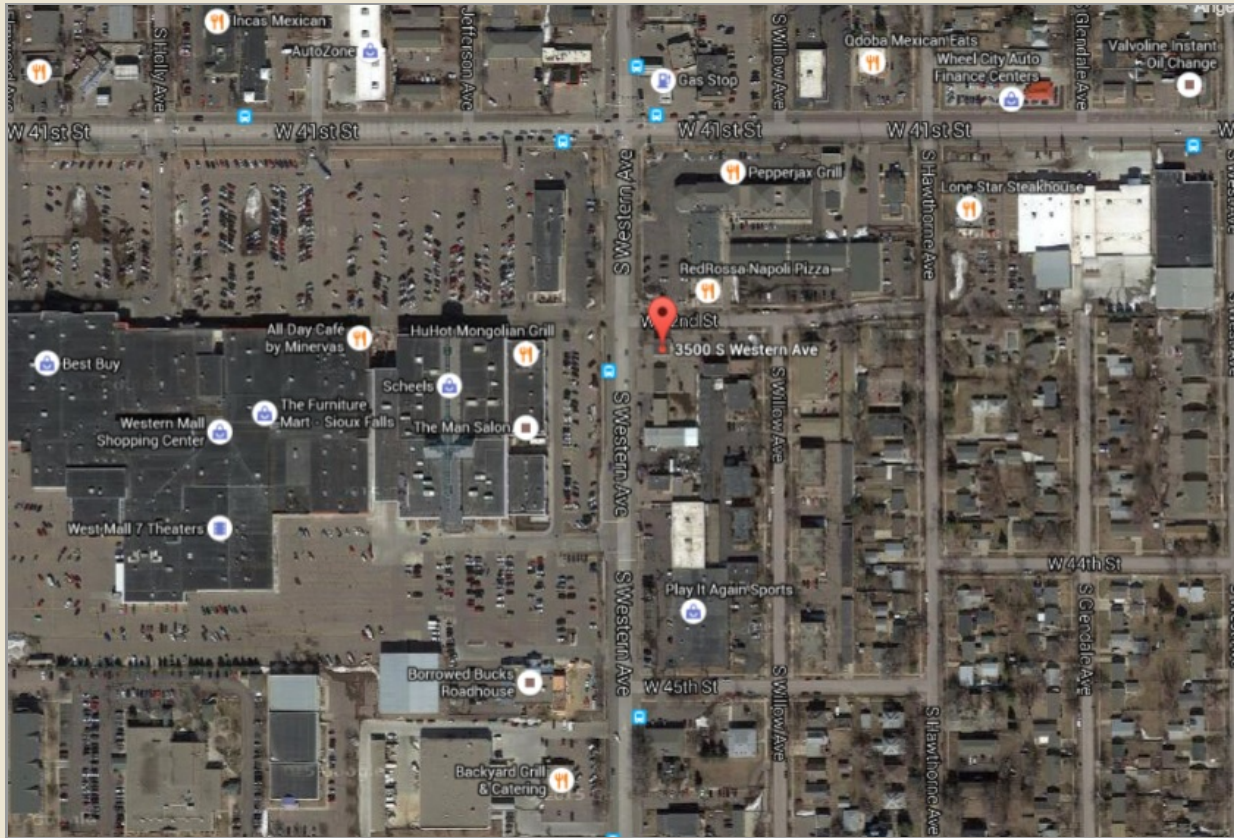
Information deemed reliable but not guaranteed

Additional Photos



Information deemed reliable but not guaranteed

Location



Information deemed reliable but not guaranteed



3408 S. Sycamore Avenue | Sioux Falls, SD, 57110 | 605-371-0332
www.harr-lemmecommercial.com