



## Retail Space 26th Street Plaza Watertown

2643 10th Ave SE Watertown, SD, 57201



26th Street Plaza is great for a retail location, this is in a heavily trafficked area. Great signage and visibility as Walmart is a southern neighbor along with many other retail spaces in this area. Spacious and open work space with 1,872 Sq Ft available.

## FOR LEASE

### Price

\$8.24 / Square Foot  
**Addl. Pricing:** Plus NNN

### Details

- Type:** Retail
- Space Available:** 1,872
- Available:** July 1, 2019
- Stories:** 1
- Baths:** 1
- Parking:** On Site
- Parking Capacity:** 11-20
- Construction:** Masonry
- Floors:** Carpet, Concrete
- Roof:** Tar and Gravel
- Heat:** Central
- Heat Source:** Natural Gas
- Air Conditioning:** Central
- Services:** Sanitation Sewer, Natural Gas, Curb/Gutter, City Water
- Safety Features:** Sprinkler, Smoke Detector, Exterior Lighting
- Showing Instructions:** Call Broker
- Access:** County Road
- Road Surface:** Asphalt, Asphalt
- Disability Access:** Ramped Entrance, Handicapped Parking



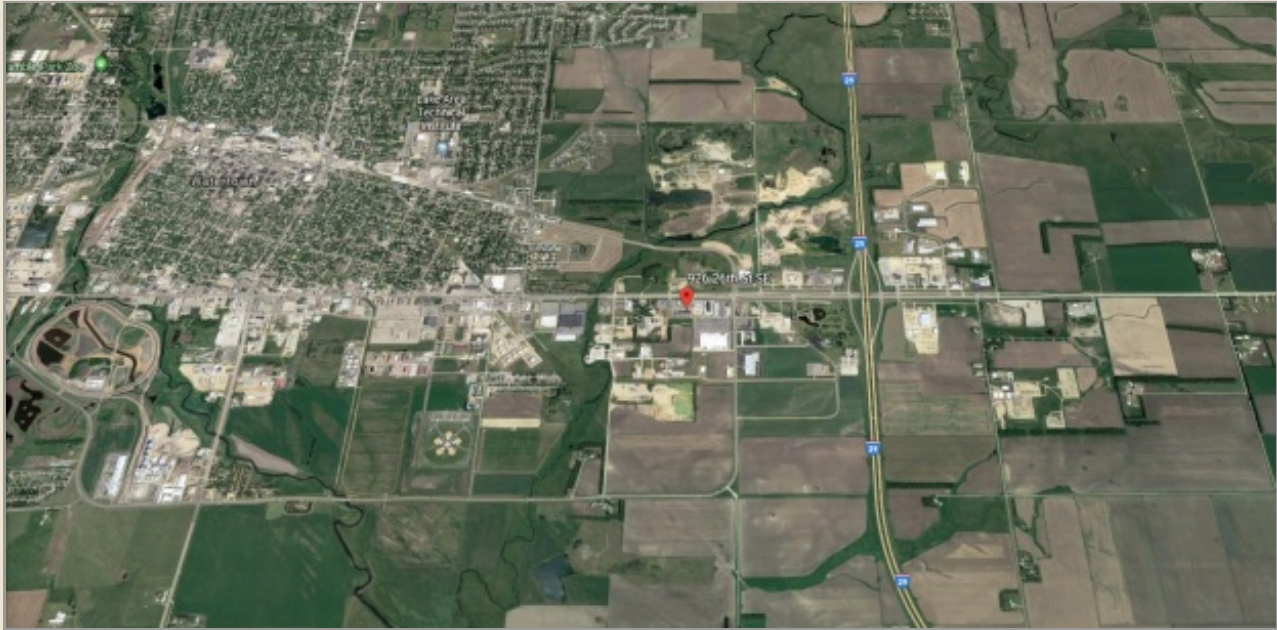
**Kirby Proehl**  
5735 E 41st Street  
Sioux Falls, SD 57110  
Cell: 605-366-8030  
Fax: 605-371-1560  
kirby@harr-lemme.com



**Paul Gourley**  
5735 E 41st Street  
Sioux Falls, SD 57110  
Cell: 605-359-1968 Cell/Text  
Fax: 605-371-1560  
phgourley@gmail.com

Information deemed reliable but not guaranteed

# Location Maps

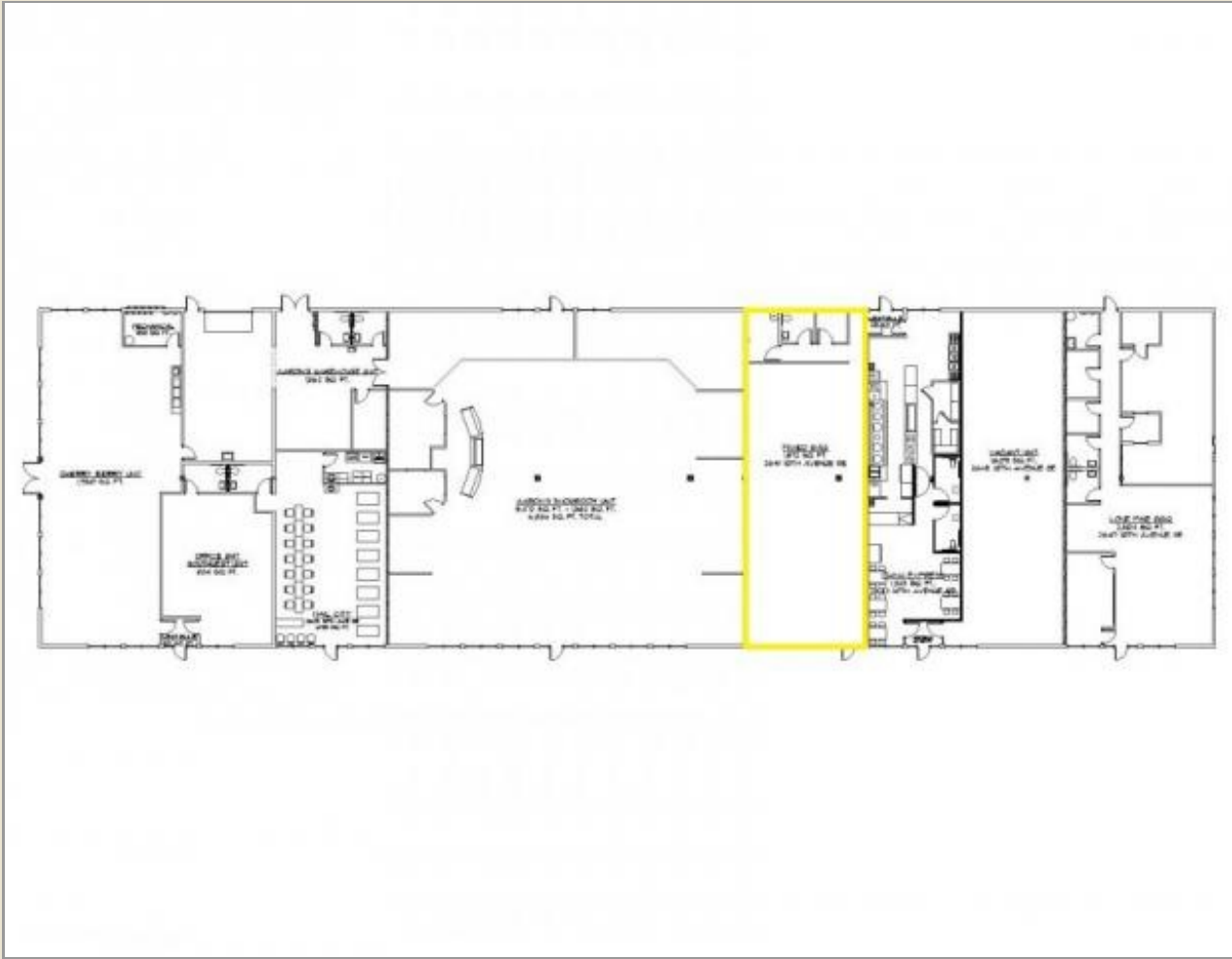


Information deemed reliable but not guaranteed



5735 E 41st Street | Sioux Falls, SD, 57110 | 605-371-0332  
[www.harr-lemmecommercial.com](http://www.harr-lemmecommercial.com)

# Floor Plans



Information deemed reliable but not guaranteed