

Office Space for Lease at Heather Ridge

6200 S Old Village Pl Sioux Falls, SD, 57108



Class "A" office finishes with beautifully landscaped exterior.

This space includes a 2,397 square foot office suite with a small reception area, four private offices and a large open work area. A wet bar and storage room are also included. Shared restrooms.

2,397 Sq Ft. \$17.50 Sq Ft Base Rent. \$5.15 Sq Ft NNN. \$4,524 Total Monthly Rent.

Neighboring tenants in Heather Ridge development include Thrivent Financial, HDR Engineering, RBC Wealth Management, Williams Insurance, Look's Meat Market, McNally's Restaurant, Fianni Jewelers, County and More, Active Spine Chiropractic, First Dakota Bank and Bancorp Corporation.

FOR LEASE

Price

\$3,495 / Month

Addl. Pricing: \$5.15/sf NNN

Details

Type: Office

Space Available: 2,397 sq ft

Available: October/November 2018

Zoning: Office

Year Built: 2005

Stories: 1

Baths: 2

Parking: On Site

Parking Capacity: 51+

Showing Instructions: Call Broker

Access: Interstate One Mile, City Street

Disability Access: Ramped Entrance, Handicapped Parking, Level Lot

Reception area

Four private offices

Storage room

Wet bar

Shared restrooms



Kirby Proehl

5735 E 41st Street
Sioux Falls, SD 57110
Cell: 605-366-8030
Fax: 605-371-1560
kirby@harr-lemme.com

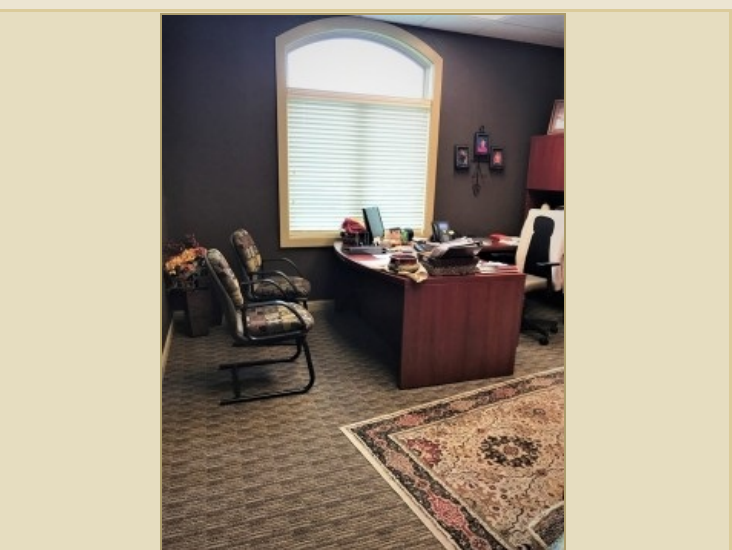
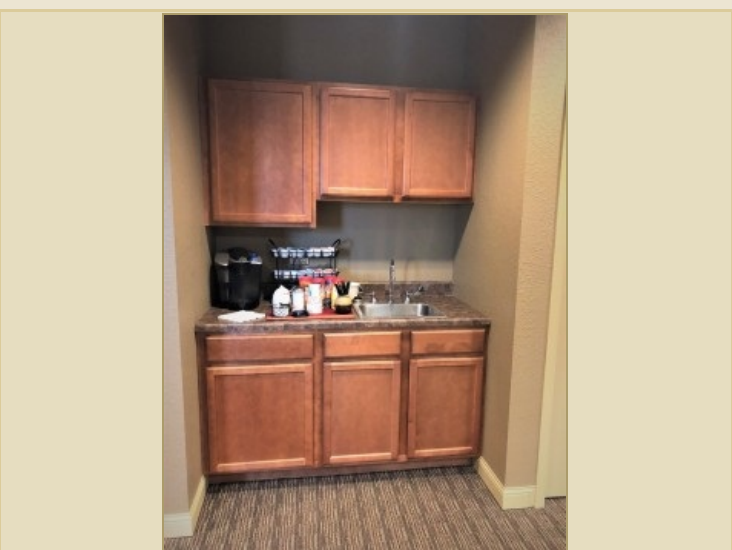
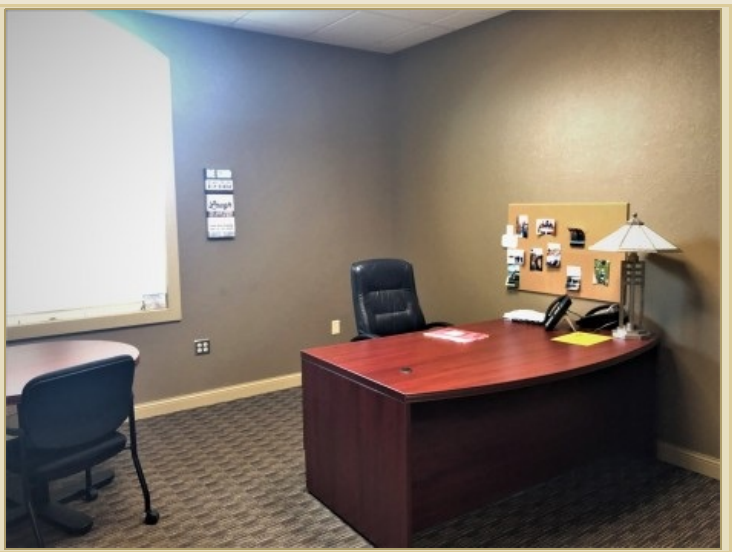


Paul Gourley

5735 E 41st Street
Sioux Falls, SD 57110
Cell: 605-359-1968 Cell/Text
Fax: 605-371-1560
phgourley@gmail.com

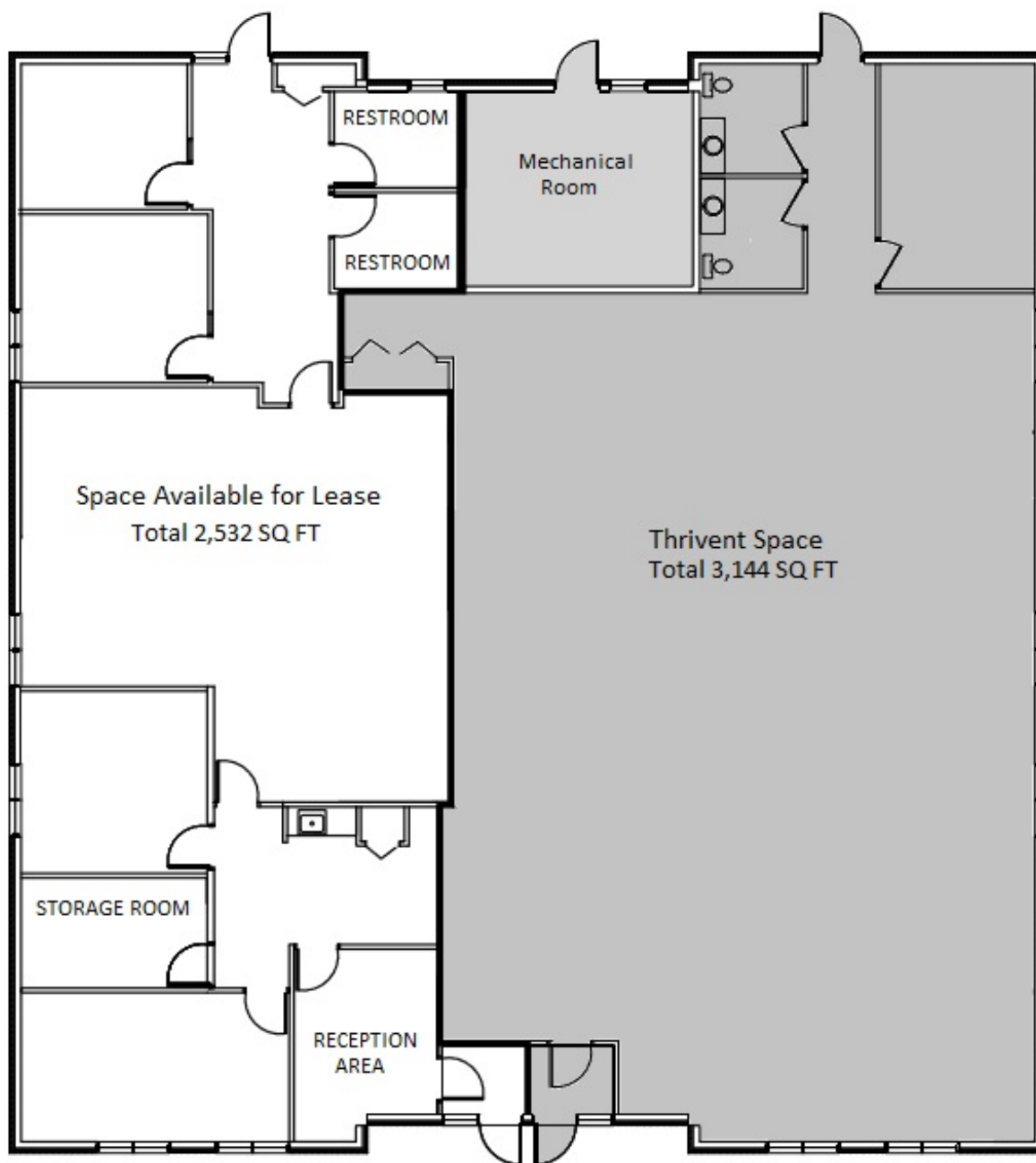
Information deemed reliable but not guaranteed

Additional Photos



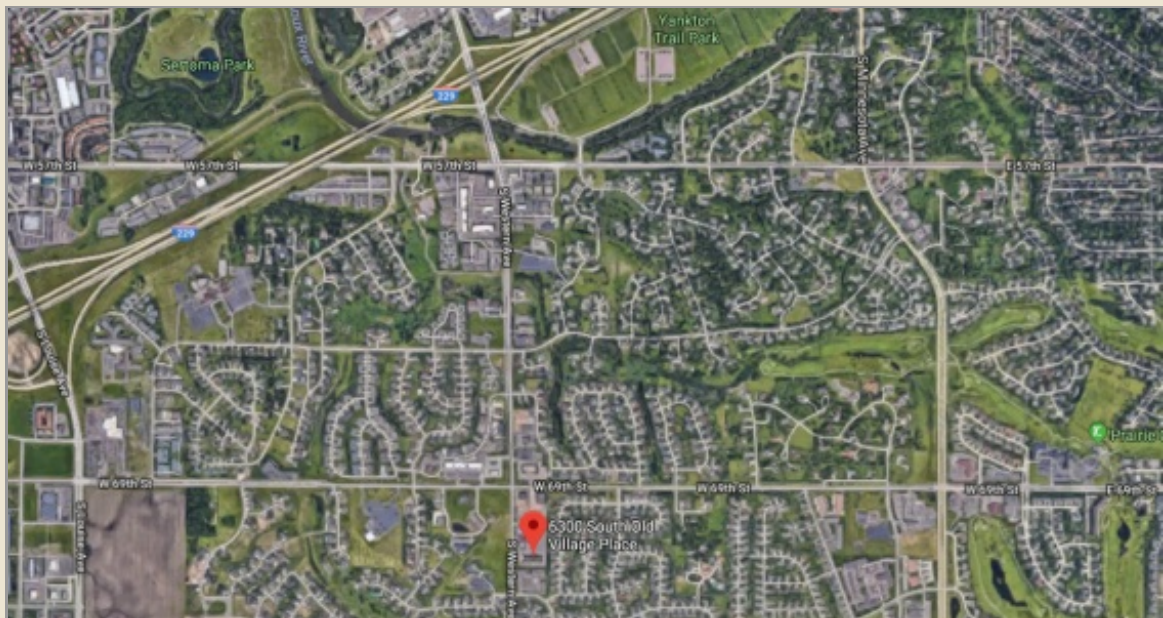
Information deemed reliable but not guaranteed

Floor Plan



Information deemed reliable but not guaranteed

Location Maps



Information deemed reliable but not guaranteed