



69th & Louise Commercial/Retail Land

SALE/LEASE

6301 S Louise Ave (a portion of) Sioux Falls, SD, 57108



Price

\$27.50 / Square Foot

Addl. Pricing: Price at \$27.50 psf or \$1,066,615.

Details

Type: Retail, Investment, Land, general-commercial

Lot Size: 38,786 sqft

Available: Immediately

Zoning: C-3 Community Commercial

Traffic Counts: 27,500 cars per day (2014)

Water: City At Site

Sewer: City Sewer

Possession: Immediate

Fantastic Commercial Lot Near SW Corner of 69th St & Louise Ave.

Landlord will consider sale, lease, or build to suit options.

Fast paced, rapidly growing area near both I-29 & I-229 Interstates.

Locate directly across the street from the proposed Avera Medical Center.

Near the proposed future 85th & I-29 interchange.

Many new hotels, restaurants, shopping, and medical facilities nearby. Culvers is neighbor to the north. Lot to the south is sold.

One of the last great retail parcels available in this desirable area.

337' deep x 115' frontage (confirm with final plat) or 38,786 sq. ft.



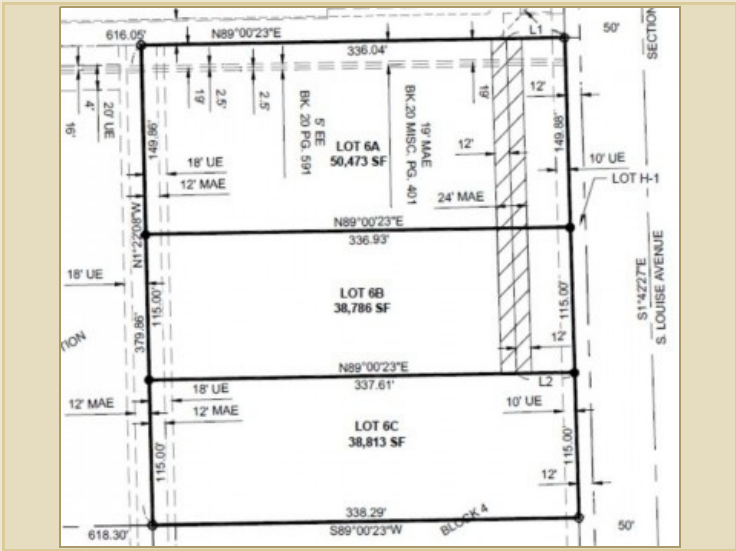
Kirby Proehl
3408 S Sycamore Ave.
Sioux Falls, SD 57110
Cell: 605-366-8030
Fax: 605-371-1560
kirby@harr-lemme.com



Kent Huisken
3408 S Sycamore Ave.
Sioux Falls, SD 57110
Cell: 605-351-3525
Fax: 605-371-1560
Kent.Huisken@sio.midco.net

Information deemed reliable but not guaranteed

Additional Photos



Information deemed reliable but not guaranteed