



Lennox Exit Light Industrial Parcel

47028 276th ST Lennox, SD, 57039

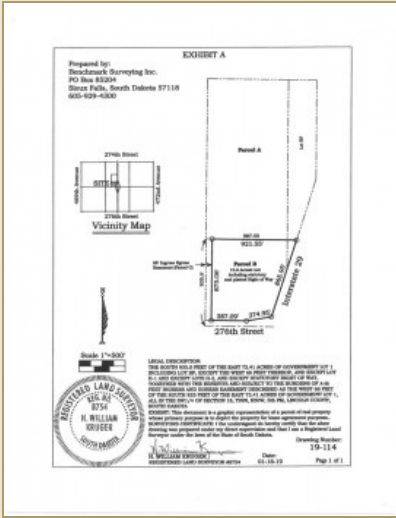
FOR SALE

Price

\$45,000
Addl. Pricing:

Details

Type: general-commercial, Land
Available: Immediately
Zoning: Light Industrial
Taxes: TBD



- Excellent development parcel for sale!
- 15.6 acres zoned Light Industrial
- Fronts 276th Street/County Highway 116
- Deceleration lane along parcel's south boundary
- Shared improved access off of Cty 116
- Borders I-29 Lennox off-ramp to the east
- Direct access to Interstate 29 at exit 68



Brad Gullickson
5735 E 41st Street
Sioux Falls, SD 57110
Cell: 605-351-4271
Fax: 605-371-1560
brad@harr-lemme.com

Information deemed reliable but not guaranteed