



I-29 Commercial Land (Harrisburg Exit) New Price!

FOR SALE

I-29 & Hwy 110 (Harrisburg Exit) Tea, SD,

Price

\$2.95 / Square Foot

Addl. Pricing:

Details

Type: Investment, Land, general-commercial

Available: Immediately

Zoning: Commercial

Lot Description: Irregular

Lot Improvements: Storm Drain

Water: Rural Water

Restrictions/Easements: Easement Right Of Way

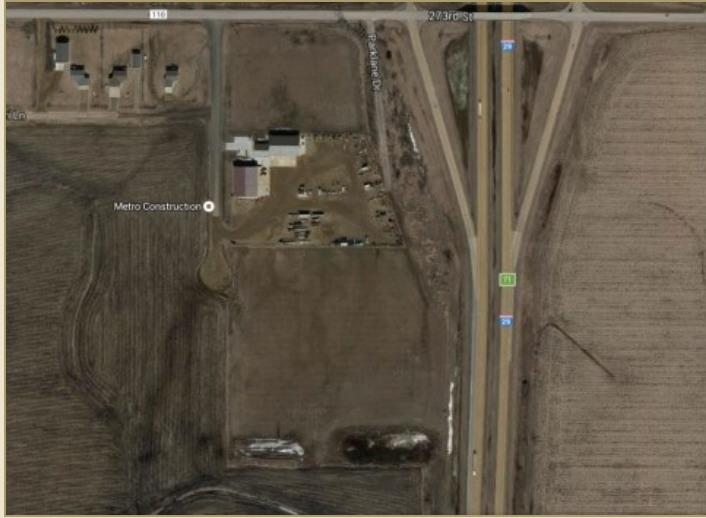
Flood Plain: Other / See Remarks

Possession: Immediate

Will Sell: Cash

Water and electric to site.

One of the last great commercial interchanges near the south gateway into Sioux Falls



Three lots have sold. One is available with great visibility and frontage on I-29. 7 acres on the south side of the development on Ponderosa Circle. Price for the south 7.07 acres (Lot 3B) is \$2.95 per square foot or \$908,509. Water retainage has already been built and water and electric stubbed to site. Neighbors include Metro Construction and personal storage units. Lot would be great for dealerships.

For a detailed plat, go to the documents icon and open there.



Kirby Proehl
5735 E 41st Street
Sioux Falls, SD 57110
Cell: 605-366-8030
Fax: 605-371-1560
kirby@harr-lemme.com



Kent Huisken
5735 E 41st Street
Sioux Falls, SD 57110
Cell: 605-351-3525
Fax: 605-371-1560
KentHuisken332@gmail.com

Information deemed reliable but not guaranteed

Additional Photos



Information deemed reliable but not guaranteed