



Heartland Professionals Building

1727 South Cleveland Ave. Unit B Sioux Falls, SD, 57104



2,900 SF +/- Class "A" office building for lease.
Several nice offices with windows. Utilities to be allocated.
Boardroom, shower, waiting area. Very functional space.
Excellent location with adequate parking.
Walk-in access to the east. Elevator available.
Available now! Information deemed reliable, but not guaranteed.

FOR LEASE

Price

\$8 / Square Foot
Addl. Pricing: NNN

Details

Type: Office
Available: Immediately
Zoning: Office
Total EXP: \$5.25
Stories: 2
Baths: 2
Parking: On Site
Parking Capacity: 6-10
Construction: Frame
Floors: Carpet
Roof: Composition
Heat: Central
Heat Source: Natural Gas
Air Conditioning: Central
Showing Instructions: Call Broker
Possession: Negotiable
Disability Access: Handicapped Parking
Lease Includes: Building(s)
Amenities: Elevator
See attached floor plan.



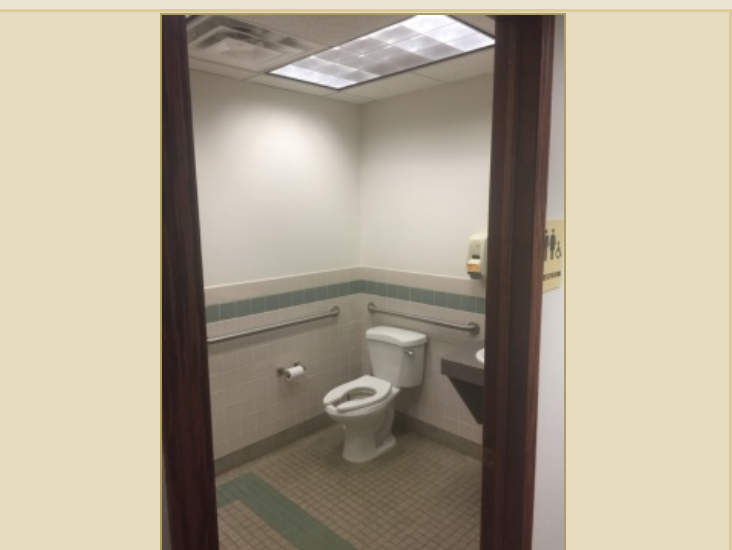
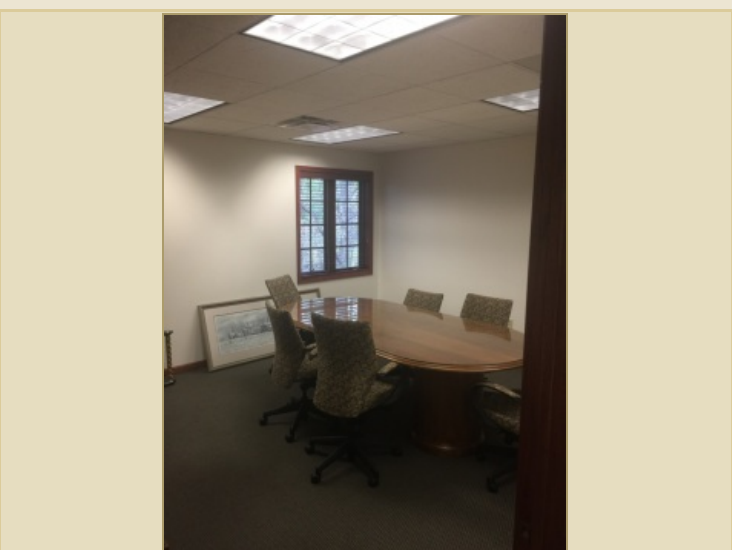
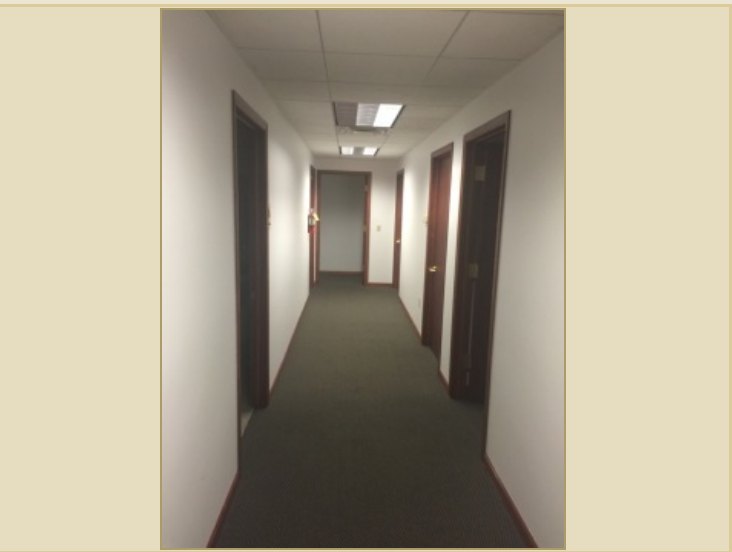
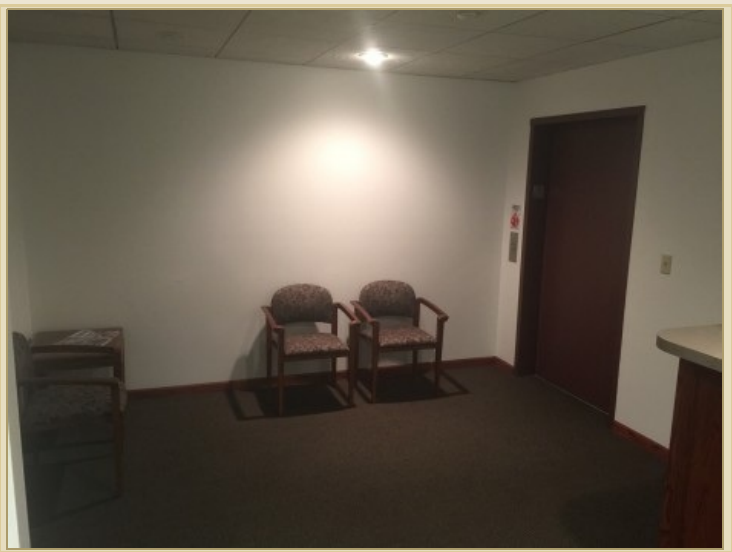
Kirby Proehl
5735 E 41st Street
Sioux Falls, SD 57110
Cell: 605-366-8030
Fax: 605-371-1560
kirby@harr-lemme.com



Brad Gullickson
5735 E 41st Street
Sioux Falls, SD 57110
Cell: 605-351-4271
Fax: 605-371-1560
brad@harr-lemme.com

Information deemed reliable but not guaranteed

Additional Photos



Information deemed reliable but not guaranteed