

## Harvester Building - Downtown Restaurant Space

196 E 6th Street Sioux Falls, SD, 57104



Historic restaurant space available in the Harvester Building. Some restaurant equipment and furniture included, some available for purchase.

Hardwood maple floors, tall ceilings, exposed timber beams. Outdoor patio. Lower level event space.

3,200 square feet on the main level. Grand stairway to large lower level banquet space (approx 3,000 SF). Additional space available for even larger events.

Walking distance to Falls Park, Levitt Stadium,

**FOR LEASE**

### Price

\$4,000 / Month

**Addl. Pricing:** Gross plus Gas & Electric

### Details

**Type:** Other, Retail, Business Opportunity

**Space Available:** 3,200 SF plus Lower Level

**Available:** October 31, 2020

**Parking:** On Site, Paved

**Showing Instructions:** Call Broker

Restaurant space with equipment

Beautiful Historic building

3,200 SF main floor

Large lower level banquet facility

400 Amp, Three Phase Power

Approx 3,000 SF Lower Level



**Paul Gourley**

5735 E 41st Street  
Sioux Falls, SD 57110  
Cell: 605-359-1968 Cell/Text  
Fax: 605-371-1560  
phgourley@gmail.com

Information deemed reliable but not guaranteed

Additional Photos

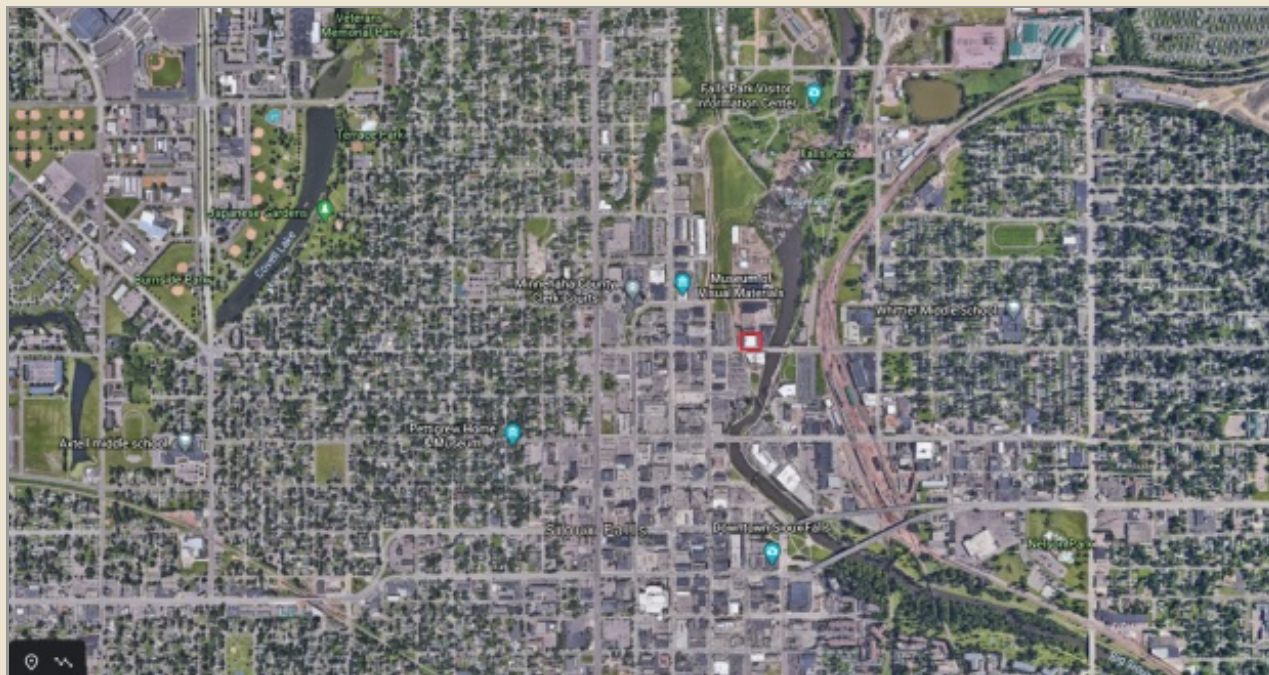


Information deemed reliable but not guaranteed



5735 E 41st Street | Sioux Falls, SD, 57110 | 605-371-0332  
www.harr-lemmecommercial.com

# Location Maps



Information deemed reliable but not guaranteed