



Halstead Light Industrial Parcel

47038 Smith Circle Harrisburg, SD, 57032

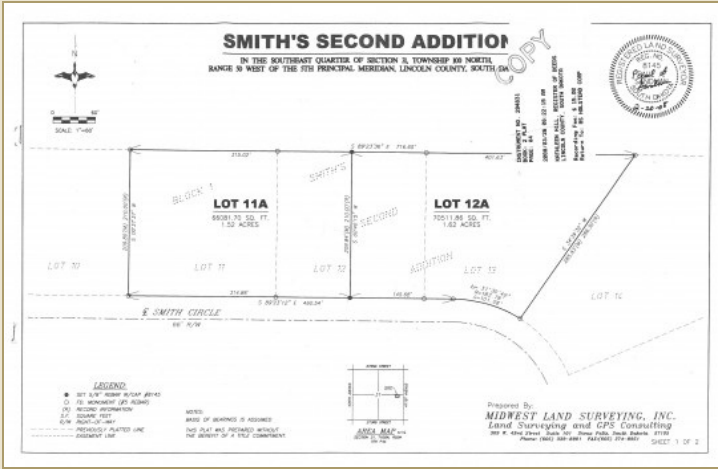
FOR SALE

Price

\$149,000
Addl. Pricing:

Details

- Type:** Farm Land, general-commercial
- Lot / Land Area:** 3.14 acres
- Available:** Immediately
- Zoning:** General Commercial
- Taxes:** 2,846
- Lot Description:** Corner, Irregular
- Road Frontage:** Private
- Crops:** None
- Water:** Rural Water
- Sewer:** Other
- Utilities:** Electricity
- Restrictions/Easements:** Recorded Plat, Subject To Zoning
- Flood Plain:** No
- Fencing:** None
- Additional Structures:** None
- Documents on File:** Legal Description, Survey, Topography Map



Affordable 3.14 acre site ready for your building plan.
 Priced at just \$1.09 PSF! Not in the flood plain!
 Property consists of two lots and has been surveyed.
 Site plan has been approved by Lincoln County.
 Access from Smith Circle via Interstate 29 @ Exit 71.
 Engineering plan completed and approved by Lincoln County.
 Rural water to site, natural gas available.
 Information deemed reliable but not guaranteed.



Brad Gullickson
 5735 E 41st Street
 Sioux Falls, SD 57110
 Cell: 605-351-4271
 Fax: 605-371-1560
 brad@harr-lemme.com

Information deemed reliable but not guaranteed