

FCA Single Office Sub-Lease Suite 200

1601 E 69th Street Sioux Falls, SD, 57108



Class "A" office building at 69th and Cliff.

Available is a single office within Suite 200, approximately 192 Square Feet. The office has large windows, including one facing the USF Football Field as well as a door that leads to the back deck. There is a reception area with fireplace, TV and a kitchenette/storage room shared with three other single offices.

Building features an elevator, well-maintained common areas and restrooms. Ample parking.

There is a common area board room for tenants use with an overhead projector, comfortable seating, conference table and kitchenette.

Tenants also have access to the deck overlooking the USF Football Stadium.

\$250 per month. Utilities and Internet Included.

FOR LEASE

Price

\$250 / Month
Addl. Pricing:

Details

Type: Office
Space Available: 192 Sq Ft
Utilities: Included
Stories: 3
Baths: 3+
Parking: On Site
Parking Capacity: 51+



Paul Gourley
5735 E 41st Street
Sioux Falls, SD 57110
Cell: 605-359-1968 Cell/Text
Fax: 605-371-1560
phgourley@gmail.com

Information deemed reliable but not guaranteed

Additional Photos



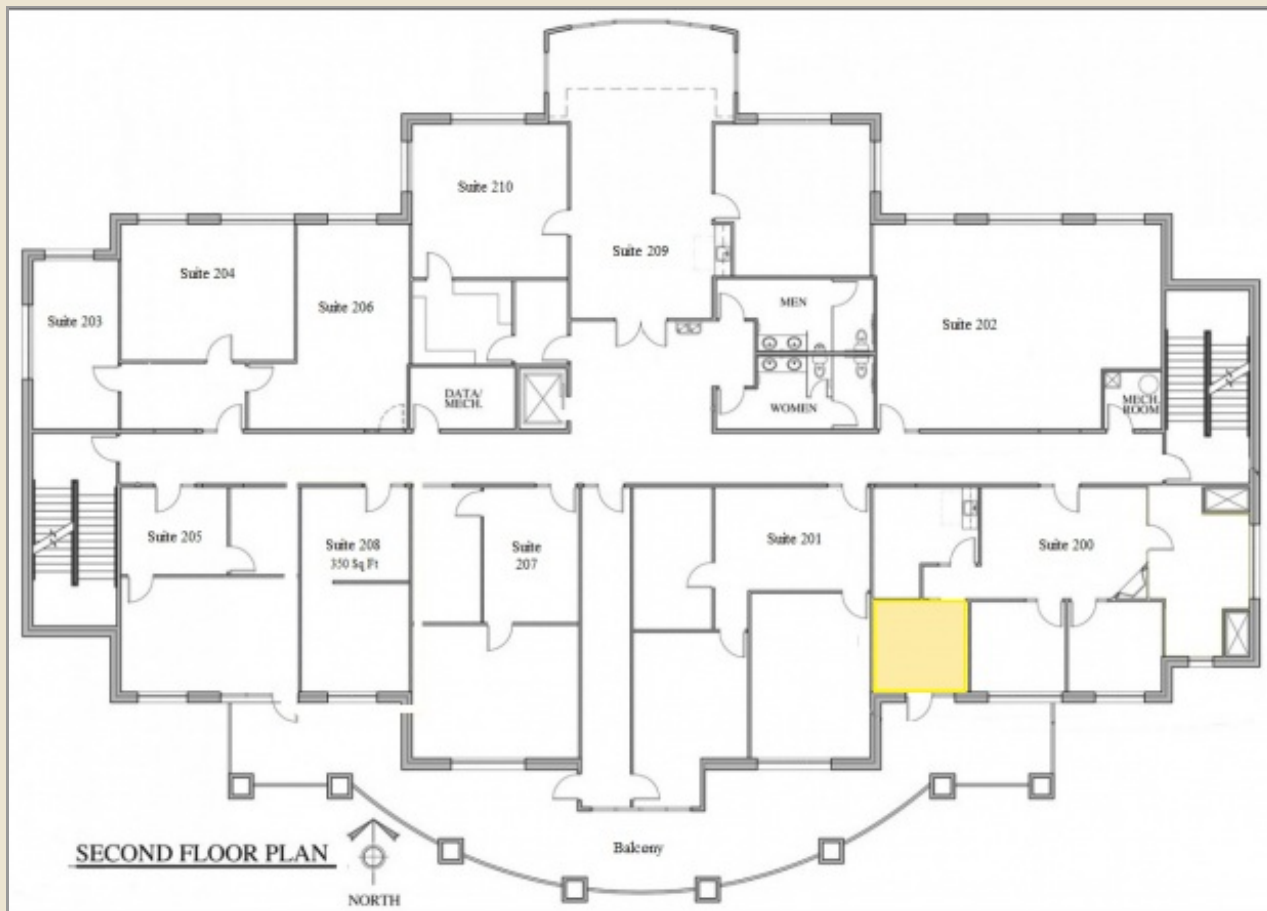
Information deemed reliable but not guaranteed

Location Maps



Information deemed reliable but not guaranteed

Floor Plan



Information deemed reliable but not guaranteed