

FCA Office Building - Suite 209

1601 East 69th St Sioux Falls, SD, 57108



Class "A" office building at 69th and Cliff.

Suite 209- Features tall ceilings and large windows with lots of natural light. Large open work area and one large private executive office. 913 sq ft. \$10 base rent, NNN estimated at \$8. Utilities included in NNN. \$1,369.49 Total Monthly Rent.

Building features an elevator, well-maintained common areas and restrooms. Ample parking.

There is a common area board room for tenants use with an overhead projector, comfortable seating, conference table and kitchenette.

Tenants also have access to the deck overlooking the USF Football Stadium.

FOR LEASE

Price

\$10 / Square Foot
Addl. Pricing: \$8.00 NNN

Details

Type: Office

Space Available: 913 SF

Available: June 1, 2019

Amenities: Elevator, Restroom - Public

Large Executive office plus open work space

Common Board Room & Outdoor Deck

Class A Building

69th and Cliff Location

Ample Parking



Kirby Proehl

5735 E 41st Street
Sioux Falls, SD 57110
Cell: 605-366-8030
Fax: 605-371-1560
kirby@harr-lemme.com

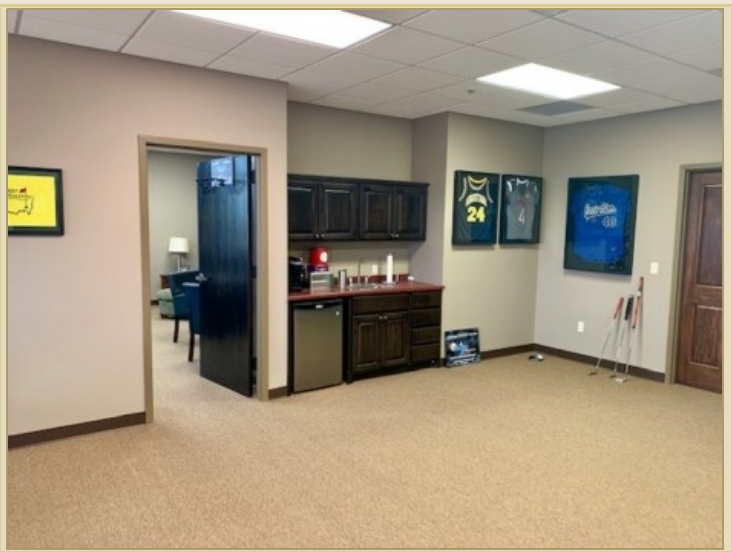


Paul Gourley

5735 E 41st Street
Sioux Falls, SD 57110
Cell: 605-359-1968 Cell/Text
Fax: 605-371-1560
phgourley@gmail.com

Information deemed reliable but not guaranteed

Additional Photos



Information deemed reliable but not guaranteed

Location Maps

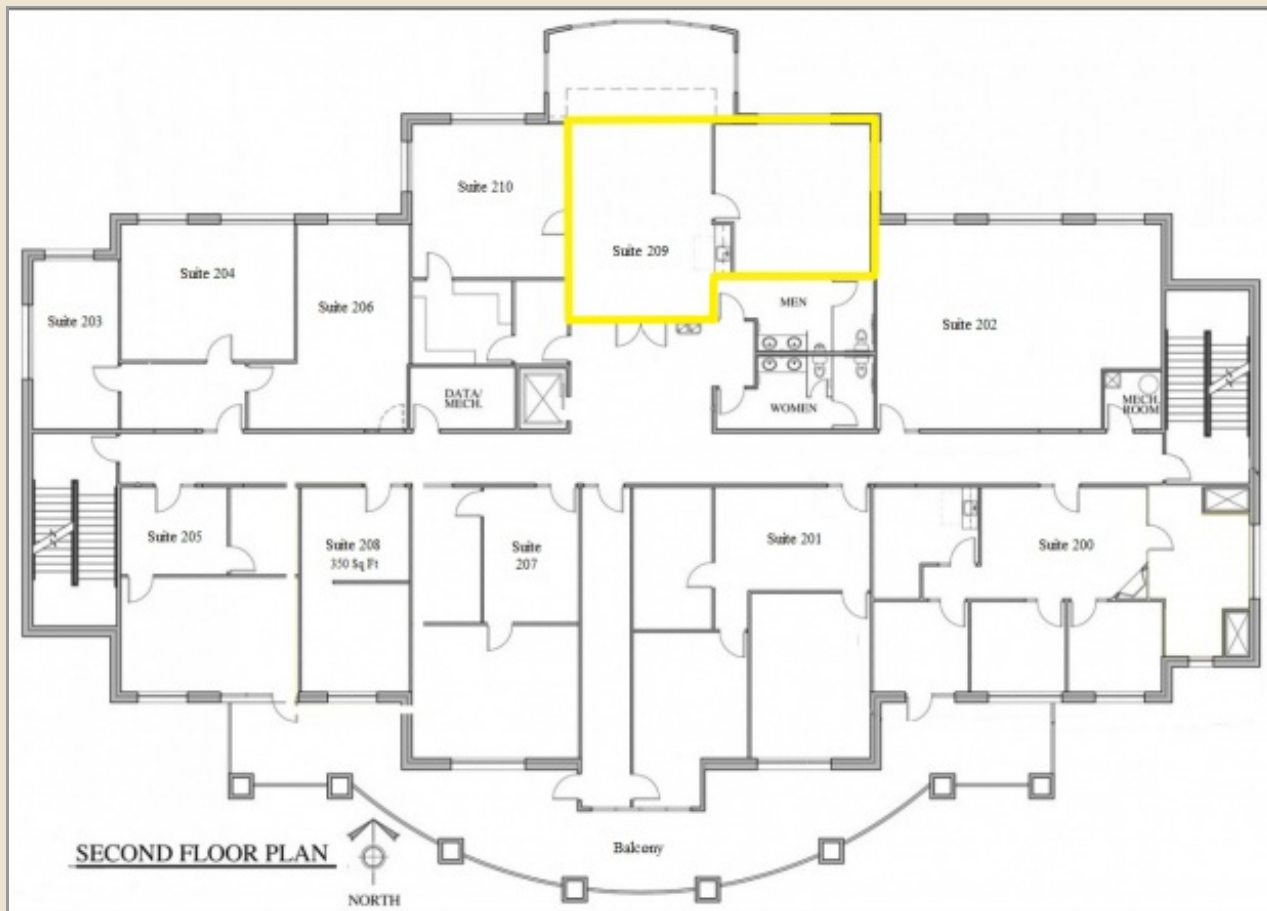


Information deemed reliable but not guaranteed



5735 E 41st Street | Sioux Falls, SD, 57110 | 605-371-0332
www.harr-lemmecommercial.com

Floor Plan



Information deemed reliable but not guaranteed