

Downtown Eastbank Office/Retail Space **FOR LEASE**

818 E 8th Street Sioux Falls, SD, 57103



Three retail/office spaces available in downtown upcoming East Bank area, walking distance from several restaurants & coffee shops.

Great space for a storefront opportunity and large area to build out to fit your needs. Historic renovation under way including new storefront facade and common areas. There is an on-site paved parking lot.

Characteristics include an open floor plan with 11 foot ceilings and original brick walls. Common men's and women's restrooms being remodeled.

\$10.00 PSF Gross plus pro-rated utilities.

2,750 SF

\$2,292/month Gross + Pro-rated utilities.

Price

\$10 / Square Foot

Addl. Pricing: Gross plus Pro-Rated Utilities

Details

Type: Other, Retail, Office

Baths: 2

Showing Instructions: Call Broker

Storefront Opportunity

Paved On Site Parking

11-Foot Ceilings

Downtown Eastbank Location

Willing to Subdivide



Paul Gourley

3408 S Sycamore Ave.
Sioux Falls, SD 57110
Cell: 605-359-1968 Cell/Text
Fax: 605-371-1560
phgourley@gmail.com

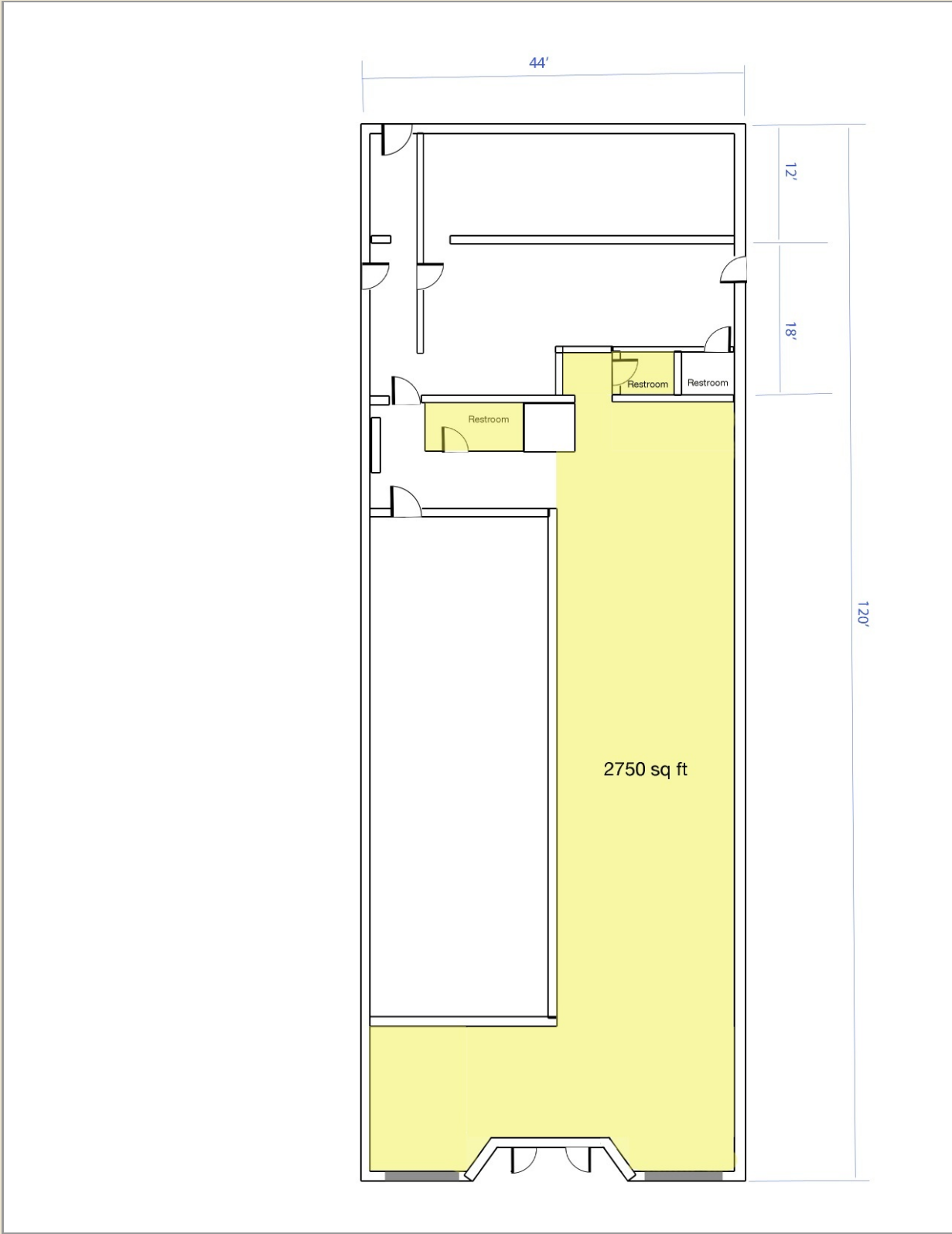
Information deemed reliable but not guaranteed

Additional Photos



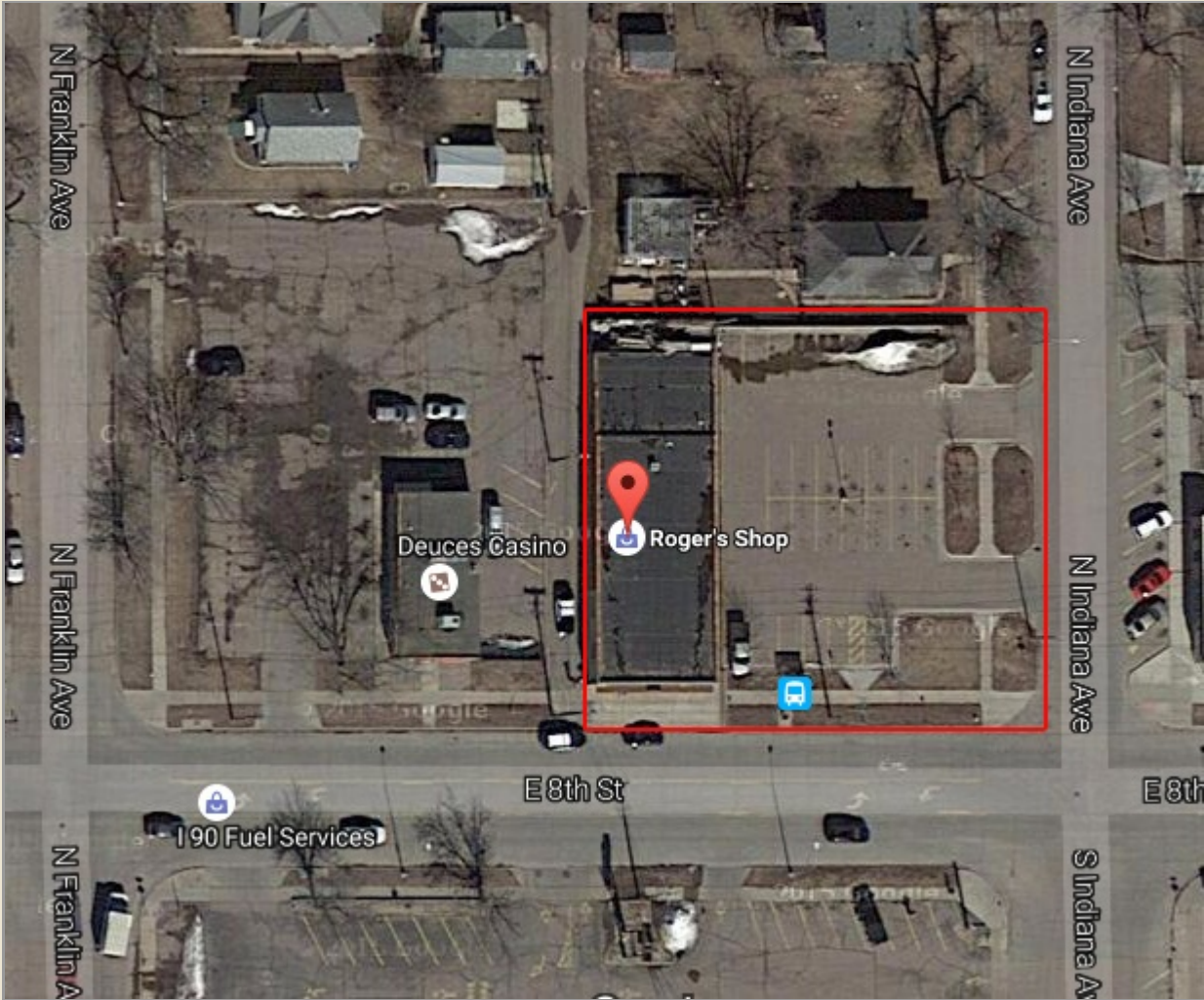
Information deemed reliable but not guaranteed

Floorplan



Information deemed reliable but not guaranteed

Location



Information deemed reliable but not guaranteed



3408 S. Sycamore Avenue | Sioux Falls, SD, 57110 | 605-371-0332

www.harr-lemmecommercial.com