

Cedar Plaza Suite 4A

5009 W 12th St Sioux Falls, SD, 57106



Cedar Plaza is located on 12th Street with a traffic count of 21,500 cars per day. Building features include ample on-site parking, common conference room, and monument signage facing 12th St.

Parking lot and siding improvements are underway, in addition with carpet and painting repairs.

Suite 4A is 1,040 SF and consists of:

- Three Offices
- Private Restroom
- Storage Closet
- Large, open reception and work space
- Additional basement storage available, connected directly to suite.

1,040 SF x \$12 PSF = \$1,040 / Month Gross + Prorated gas & electric

FOR LEASE

Price

\$12 / Square Foot

Addl. Pricing: \$1,040/month Gross, Prorated Utilities

Details

Type: Retail, Office

Available: Immediately

Stories: 1

Parking: On Site

Showing Instructions: Call Broker

Monument Signage

Ample on-site parking

Common Conference Room

Three offices and large reception/work area

Private Restroom

Storage Closet



Kirby Proehl
3408 S Sycamore Ave.
Sioux Falls, SD 57110
Cell: 605-366-8030
Fax: 605-371-1560
kirby@harr-lemme.com



Paul Gourley
3408 S Sycamore Ave.
Sioux Falls, SD 57110
Cell: 605-359-1968 Cell/Text
Fax: 605-371-1560
phgourley@gmail.com

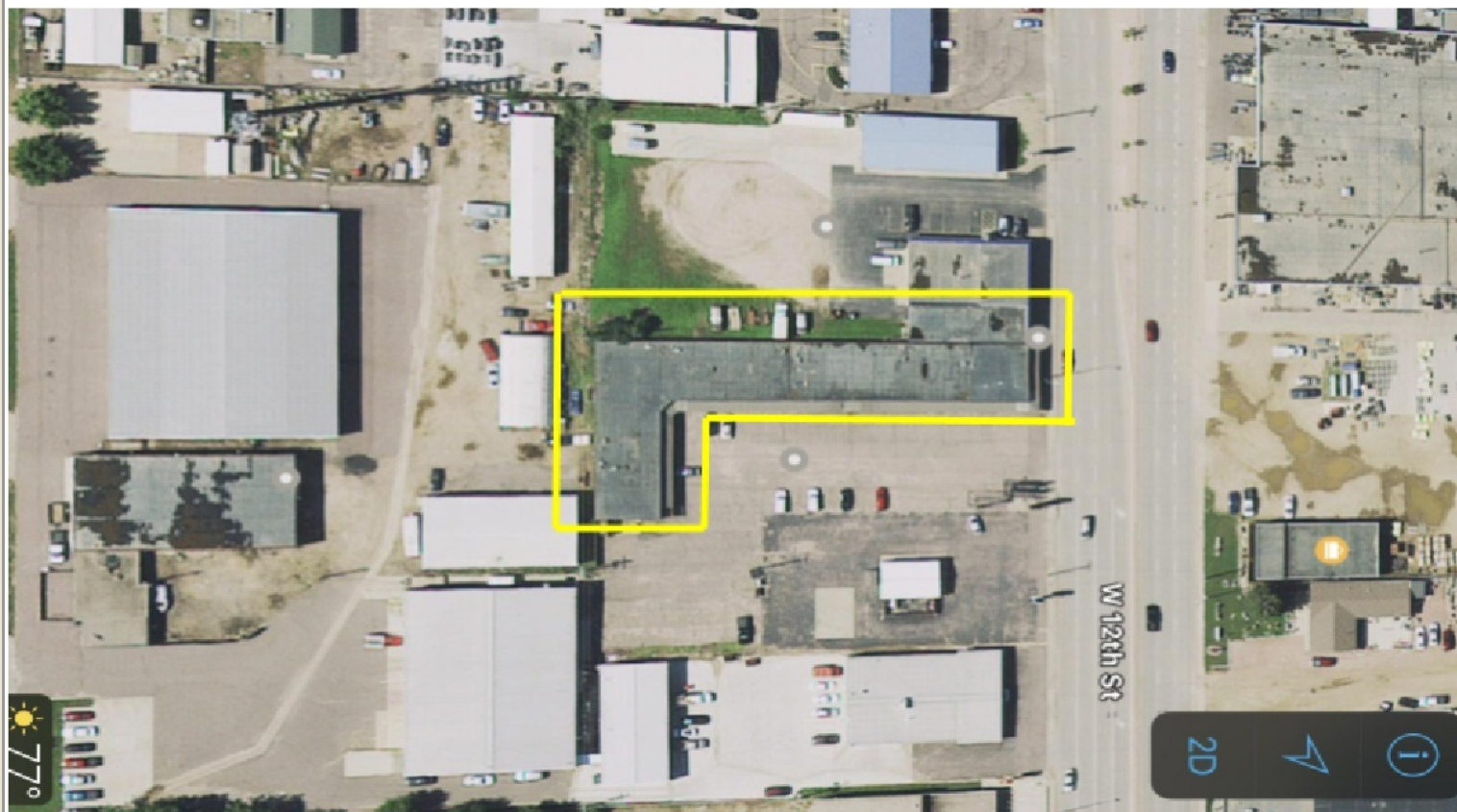
Information deemed reliable but not guaranteed

Additional Photos



Information deemed reliable but not guaranteed

Location Maps

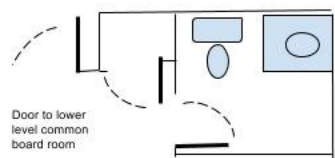


Information deemed reliable but not guaranteed

Floor Plan

Cedar Plaza
5009 W. 12th St.
Suite 4A
1,040 Square Feet

*Information deemed reliable but not accurate



Door to lower level common board room

Front Entry way

Information deemed reliable but not guaranteed



3408 S. Sycamore Avenue | Sioux Falls, SD, 57110 | 605-371-0332

www.harr-lemmecommercial.com