

69th & Louise Commercial/Retail Land

SALE/LEASE

6301 S Louise Ave (a portion of) Sioux Falls, SD, 57108



Fantastic Commercial Lot Near SW Corner of 69th St & Louise Ave. Landlord will consider sale, lease, or build to suit options. Fast paced, rapidly growing area near both I-29 & I-229 Interstates. Located directly across the street from the proposed Avera Medical Center Near the proposed future 85th & I-29 interchange. Many new hotels, restaurants, shopping, and medical facilities nearby. Culvers is neighbor to the north. SilverStar Car Wash is the neighbor to the South. One of the last great retail parcels available in this desirable area.

The lot is 337' deep x 115' frontage (confirm with final plat) or 38,786 sq. ft. Priced at \$27.50 psf is \$1,066,615 for the land.

Prospective Tenants: Please see the attached concept plan allowing for up to a 9,000 sq. ft. building which could be home to one or multiple tenants. Lease rate estimated at \$20 psf with a \$25 psf built out allowance. Here's your chance to get a great location and lease a brand new building designed specifically for you.

Price

Price: Price at \$27.50 psf or \$1,066,615. or build to suite lease at \$20 psf

Details

Type: Land, general-commercial, Retail, Investment

Space Available: 9,000 sq. ft.

Lot / Land Area: 38,786 sq. ft.

Available: Immediately

Zoning: C-3 Community Commercial

Traffic Counts: 27,500 cars per day (2014)

Road Surface: Asphalt, Asphalt

Lot Improvements: Curbs and Gutters, Sidewalks

Road Frontage: City

Water: City At Site

Sewer: City Sewer

Utilities: City Gas, Electricity

Restrictions/Easements: Recorded Plat, Easement Right Of Way

Documents on File: Legal Description, Survey, Topography Map, Aerial Photo, Right of Way

Possession: Immediate



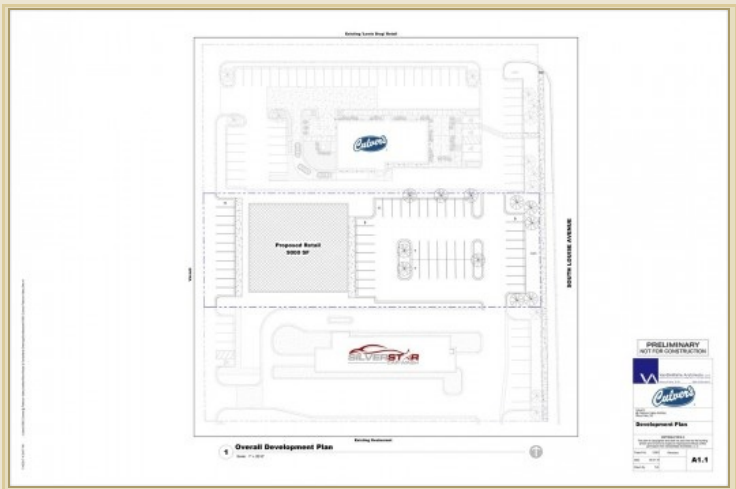
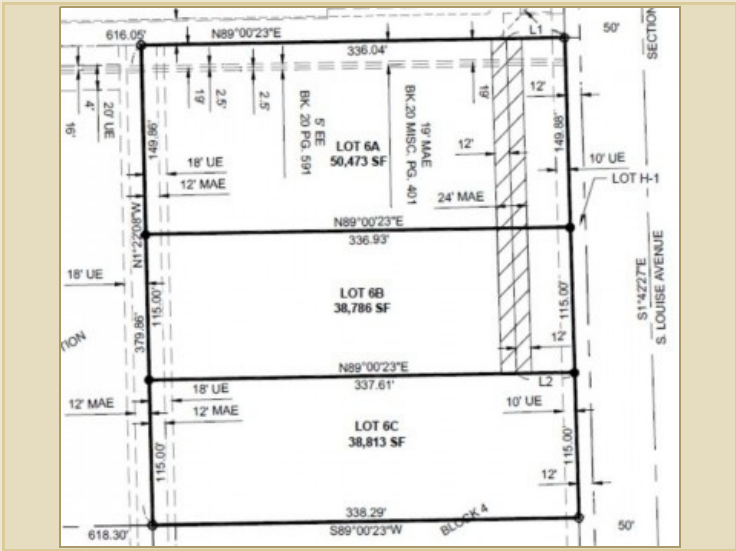
Kirby Proehl
3408 S Sycamore Ave.
Sioux Falls, SD 57110
Cell: 605-366-8030
Fax: 605-371-1560
kirby@harr-lemme.com



Kent Huisken
3408 S Sycamore Ave.
Sioux Falls, SD 57110
Cell: 605-351-3525
Fax: 605-371-1560
KentHuisken332@gmail.com

Information deemed reliable but not guaranteed

Additional Photos



Information deemed reliable but not guaranteed