



41st St & SD100

SW Corner of 41 St. & Hwy. 11 Sioux Falls, SD,

FOR SALE



Price

\$12 / Square Foot
Addl. Pricing: Can be subdivided.

Details

- Type:** Land, Investment
 - Available:** Immediately
 - Zoning:** C-4 Commercial
 - Lot Description:** Corner
 - Lot Improvements:** Storm Drain
 - Road Frontage:** State, City
 - Water:** City At Site
 - Sewer:** City Sewer
 - Utilities:** City Gas, Electricity, Telephone Lines, Storm Sewer
 - Restrictions/Easements:** Recorded Plat, Easement Right Of Way
 - Documents on File:** Legal Description, Survey, Topography Map, Aerial Photo, Right of Way
 - Possession:** Immediate
- 5.5 acres on the SouthWest corner of 41st Street & SD Highway 11, which will become the new SD100, expected to connect to I-90 in 2018/19.
- This is an at-grade intersection on the new SD100 beltway.
- Fantastic commercial property on the rapidly growing East side.
- Great location for car dealer, strip center, restaurant, hotel, medical center, etc.
- Water & sewer stubbed to the site. Can be sub-divided.
- Neighbors include KumNGo Convenience Store, Harr-Lemme Real Estate Office, Sport Games Gym, and Harmodon Park Ballfields.
- Ownership group consists of licensed brokers.



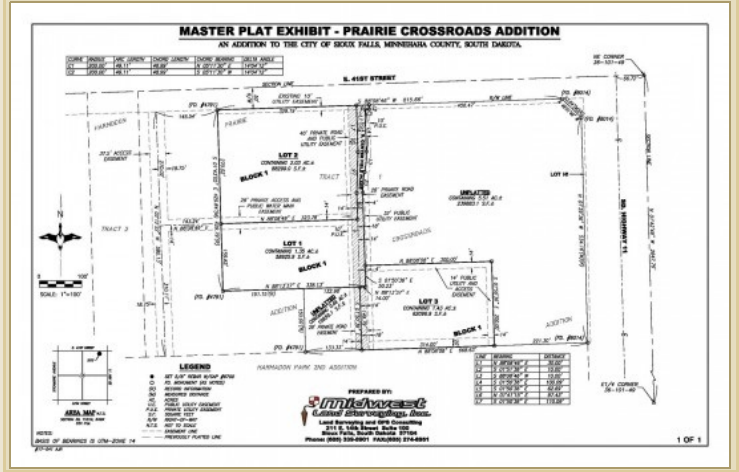
Kirby Proehl
5735 E 41st Street
Sioux Falls, SD 57110
Cell: 605-366-8030
Fax: 605-371-1560
kirby@harr-lemme.com



Kent Huisken
5735 E 41st Street
Sioux Falls, SD 57110
Cell: 605-351-3525
Fax: 605-371-1560
KentHuisken332@gmail.com

Information deemed reliable but not guaranteed

Additional Photos



Information deemed reliable but not guaranteed



5735 E 41st Street | Sioux Falls, SD, 57110 | 605-371-0332
www.harr-lemmecommercial.com